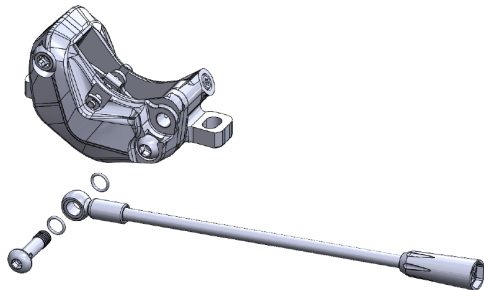


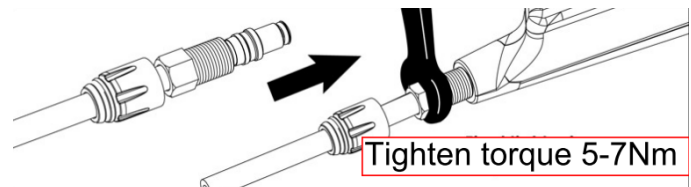
TEKTRO – Bosch ABS brake HD-T533 Spare Parts Manual

Model No.	No.	Item	Description	Part No.
HD-T533	1	Caliper Warranty	DO6.7 Caliper for Front (4 piston)	ABHC000124
	2		SB caliper for Rear (2 piston)	ABHC000125
	3	Lever Set	HM1.4 Lever set, Left w/ABS logo	ABHL000576
	4		HM1.4 Lever set, Right	ABHL000575
	5		HM1.4 Lever Set – Left	ABHL000589
	6		HM1.4 Lever Set – Right w/ABS logo	ABHL000590
	7	Lever blade	HM1.2 Lever blade kits	ABOT000991
	8	Reservoir Kits	HM1.0 reservoir cap & gasket, Left	ABOT001049
	9		HM1.0 reservoir cap & gasket, Right	ABOT001048
	10	Lever hose kits	850mm hose kit W/QE connector	ABOT001117
	11	Caliper side hose kits	125mm hose kit with banjo & QE connector	ABOT001157
	12		150mm hose kit with banjo & QE connector	ABOT001159
	13		190mm hose kit with banjo & QE connector	ABOT001161

Caliper NO.1-2



No.2-5 lever



I. Installing new caliper: No.1-2

1. First disconnect the lower section of hydraulic hose from ABS unit to prevent oil loss.
2. Remove the 4mm Banjo bolt to separate the caliper and hydraulic hose.
3. Attach the new caliper to the banjo fitting using two new O-rings, and bolt.
4. The banjo bolt should be torque to 6-8Nm.

II. Replace new lever : No.3-6

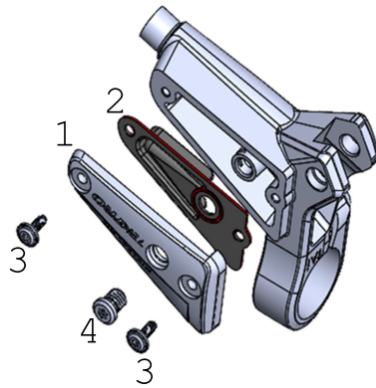
1. Loosen the 8mm compression nut to remove the hydraulic hose from the lever.
2. Cut off the old olive and barb (cut hose 1cm from the end), make sure the cut is square.
3. Slide the compression nut cover, compression nut, and olive onto the hose and then install a new barb into the hose.
4. Seat the barb in the lever then slide the olive and compression nut into place and tighten to 5-7Nm.
5. For further details, you may refer to our "EZ-Plug" manual.

III. Replace lever blade: No.7

Please refer instruction file of Tektro HD-T533 Lever blade replacement instructions.

IV. Replace reservoir cap kit : No.8-9

Kits including: ① Reservoir cap x 1 ② Reservoir gasket x 1
 ③ M3x8 fixing screw x 2 ④ Bleeding port screw with O-ring x 1

**A. Removing reservoir top cap and gasket:**

1. Loosen the bar clamp and rotate the lever on the bar until the reservoir is parallel with the ground to prevent the loss of oil.
2. Use a T15 torx wrench to remove the bleed port screw④
3. Use a T10 torx wrench to remove the two reservoir top cap screws③, then remove the top cap and gasket.

B. Installing new reservoir top cap and gasket :

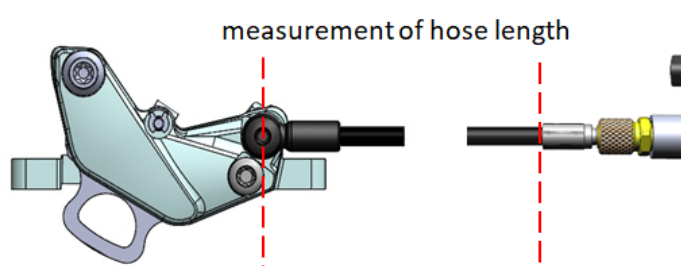
1. Thoroughly clean the edge of the reservoir on the lever so that oil doesn't get trapped between it and rubber gasket.
2. Place the gasket② and reservoir top cap① onto the reservoir.
3. Loosely install the two fixing screws③ then tighten to 0.8-1.2 Nm.
4. Install bleed port screw④ then tighten to 0.8-1.2 Nm.

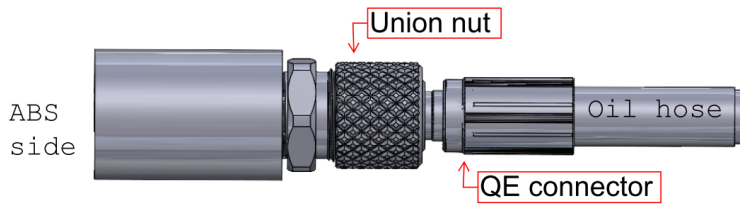
V. Replace oil hose with QE connector:**A. When installing new hydraulic hose on lever side of ABS unit: No.9**

1. Cut the new hose to the appropriate length for lever side.
2. Refer **section II** for how to install the hydraulic hose in the lever

B. When replace new hose for caliper side: No.11-13

Choose the appropriate length and PN for your bike. You may measure the original hose length from center of banjo bolt to end of QE connector (see fig. below)



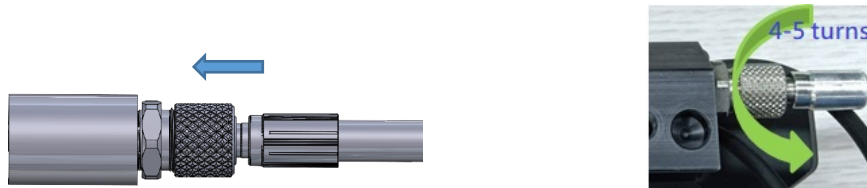


C: Disconnecting the QE connector from the ABS unit



1. Take off the QE connectors rubber cover by sliding it away from the ABS unit.
2. Unscrew the union nut by turning it clockwise 4-5 turns until the hose QE connector releases with a slight pull.

D: Connecting oil hose to ABS unit



1. Push the union nut towards the ABS unit and plug the hose connector into the union nut at the same time.
2. Turn union nut counterclockwise to lock the QE connector.
3. Check by pulling the brake hose to see if it pops out.

VI. Replacing mineral oil

1. The brake must be bled after replacing the caliper, lever, or hydraulic hose.
2. Follow regular operation of hydraulic disc brake or P refer to our Bleed Procedure instructions to bleed the brake.
3. Only use TRP and Tektro branded mineral oil when servicing the brake.

- NOTE**
1. Use original specification spare parts for maintenance.
 2. Suggest having qualified bicycle mechanic to install, secure and maintain.
 3. Fully check brake performance before riding.
 4. If any doubts, recommend to find a Bosch ABS authorized dealer shop to check first.

For warranty related questions or more information please contact Tektro Service Center which you can find from our homepage www.tektro.com.