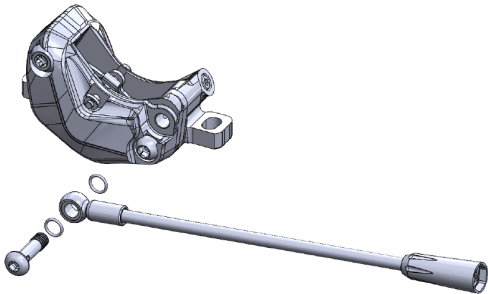


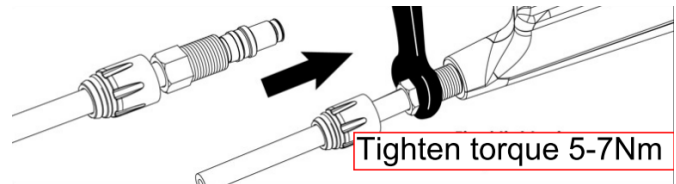
TRP – Bosch ABS brake HD-M844 Spare Parts Manual

Model No.	No.	Item	Description	Part No.
HD-M844	1	Caliper Warranty	GS2.4 Caliper	ABHC000095
	2	Lever Set	TR1.D Lever Set – Left w/ABS logo	ABHL000577
	3		TR1.D Lever Set - Right	ABHL000578
	4		TR1.D Lever Set – Left	ABHL000596
	5		TR1.D Lever Set – Right w/ABS logo	ABHL000595
	6		Lever Blade	GS1.4 lever blade, black
	7	Reservoir kits	TR1.1 reservoir gasket & cover, Left	ABOT001033
	8		TR1.1 reservoir gasket & cover, Right	ABOT001034
	9	hose kits for lever side	850mm hose kit W/QE connector	ABOT001116
	10	hose kits for caliper side	125mm hose kit with banjo & QE connector	ABOT001158
	11		150mm hose kit with banjo & QE connector	ABOT001160
	12		190mm hose kit with banjo & QE connector	ABOT001162

No.1 Caliper



No.2-5 lever set



I. Installing new caliper: No.1

1. First disconnect the lower section of hydraulic hose from ABS unit to prevent oil loss.
2. Remove the 4mm Banjo bolt to separate the caliper and hydraulic hose.
3. Attach the new caliper to the banjo fitting using two new O-rings, and bolt.
4. The banjo bolt should be torque to 6-8Nm.

II. Replace new lever : No.2-5

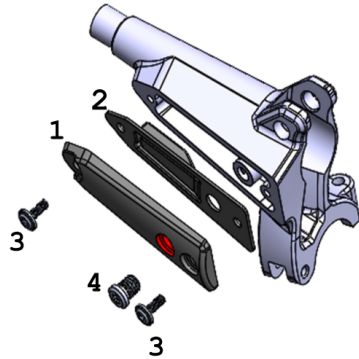
1. Loosen the 8mm compression nut to remove the hydraulic hose from the lever.
2. Cut off the old olive and barb (cut hose 1cm from the end), make sure the cut is square.
3. Slide the compression nut cover, compression nut, and olive onto the hose and then install a new barb into the hose.
4. Seat the barb in the lever then slide the olive and compression nut into place and tighten to 5-7Nm.
5. For further details, you may refer to our "EZ-Plug" manual.

III. Replace lever blade: No.6

Please refer instruction file of TRP HD-M844 Lever blade replacement manual.

IV. Replace reservoir cap kit : No.7-8

Kits including: ① Reservoir cap x 1 ② Reservoir gasket x 1
 ③ M3x8 fixing screw x 2 ④ Bleeding port screw with O-ring x 1



A. Removing reservoir top cap and gasket:

1. Loosen the bar clamp and rotate the lever on the bar until the reservoir is parallel with the ground to prevent the loss of oil.
2. Use a T15 torx wrench to remove the bleed port screw④.
3. Use a T10 torx wrench to remove the two reservoir top cap screws③, then remove the top cap and gasket

B. Installing new reservoir top cap and gasket :

1. Thoroughly clean the edge of the reservoir on the lever so that oil doesn't get trapped between it and rubber gasket.
2. Place the gasket② and reservoir top cap① onto the reservoir.
3. Loosely install the two fixing screws③ then tighten to 0.8-1.2 Nm.
4. Install the bleed port screw④ then tighten to 0.8-1.2 Nm.

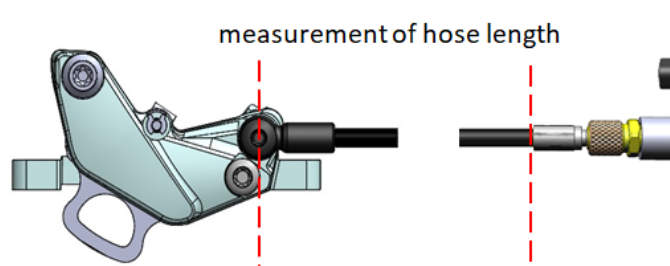
V. Replace hose with QE connector:

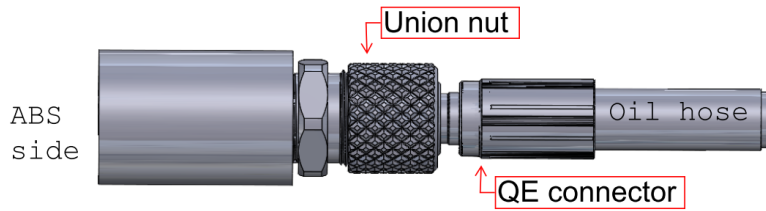
A. When installing new hydraulic hose on lever side of ABS unit: No.9

1. Cut the new hose to the appropriate length for lever side.
2. Refer **section II** for how to install the hydraulic hose in the lever.

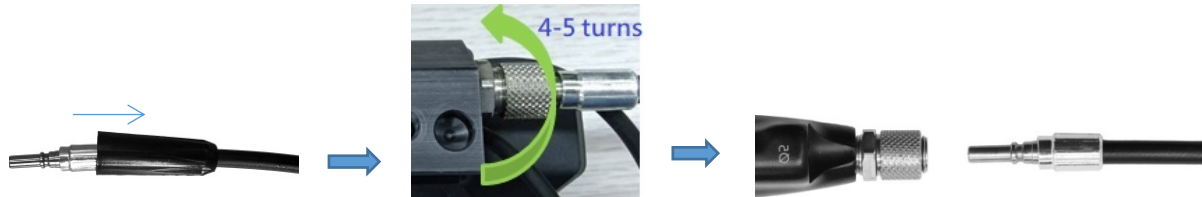
B: When replace new hose for caliper side: No.10-12

Choose the appropriate length and PN for your bike. You may measure the original hose length from center of the banjo bolt to end of QE connector (see fig. below).



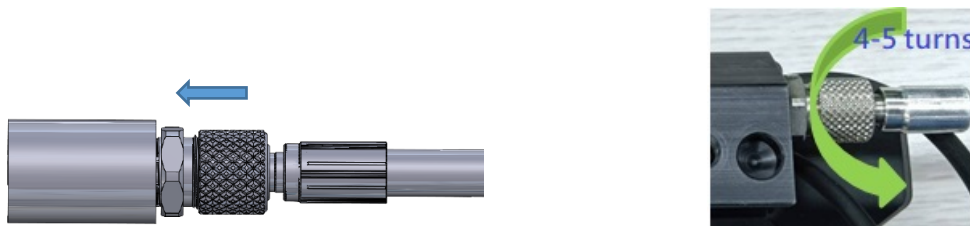


C. Disconnecting the QE connector from the ABS unit



1. Take off the QE connectors rubber cover by sliding it away from the ABS unit.
2. Unscrew the union nut by turning it clockwise 4-5 turns until the hose QE connector releases with a slight pull

D. Connecting the hydraulic hose to the ABS unit



1. Push the union nut towards the ABS unit and plug the hose connector into the union nut at the same time.
2. Turn union nut counterclockwise to lock the QE connector.
3. Check by pulling the brake hose to see if it pops out.

VI. Replacing mineral oil

1. The brake must be bled after replacing the caliper, lever, or hydraulic hose.
2. Follow regular operation of hydraulic disc brake or refer to our Bleed Procedure instructions to bleed the brake.
3. Only use TRP and Tektro branded mineral oil when servicing the brake.

- NOTE**
1. Use original specification spare parts for maintenance.
 2. Suggest having qualified bicycle mechanic to install, secure and maintain.
 3. Fully check brake performance before riding.
 4. If any doubts, we recommend taking the bike to a Bosch ABS authorized dealer shop to check first.

For warranty related questions or more information please contact Tektro Service Center which you can find from our homepage www.tektro.com.