

Replace new QE connector hose - HD-M844

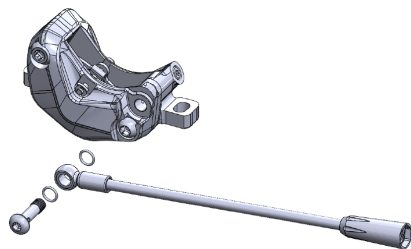
Model No.	No.	Item	Description	Part No.
HD-M844	1	hose kits for lever side	850mm hose kit W/QE connector	ABOT001116
	2	hose kits for caliper side	125mm hose kit with banjo & QE connector	ABOT001158
	3		150mm hose kit with banjo & QE connector	ABOT001160
	4		190mm hose kit with banjo & QE connector	ABOT001162

I. Replace hose with QE connector:

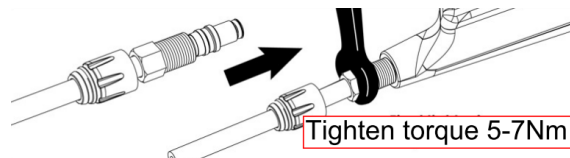
A. When installing new hydraulic hose on lever side of ABS unit: No.1

1. Loosen the 8mm compression nut to remove the hydraulic hose from the lever.
2. Cut the new hose No.1 to the appropriate length for lever side, make sure the cut is square.
3. Slide the compression nut cover, compression nut, and olive onto the hose and then install a new barb into the hose.
4. Seat the barb in the lever then slide the olive and compression nut into place and tighten to 5-7Nm.

Caliper side No.2-4

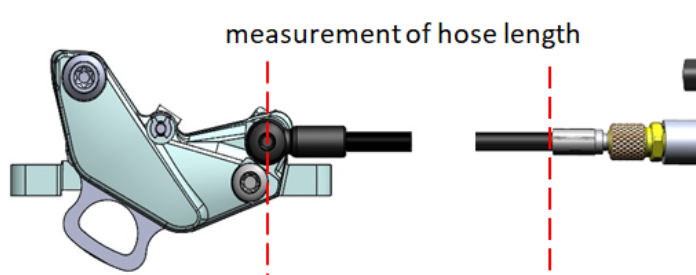


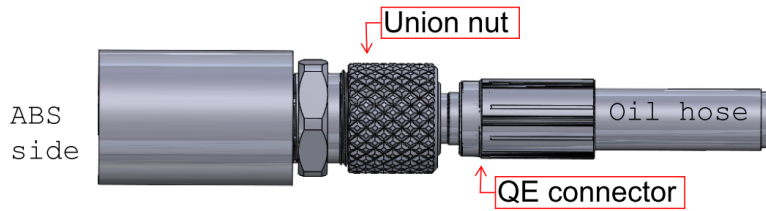
Lever side No.1



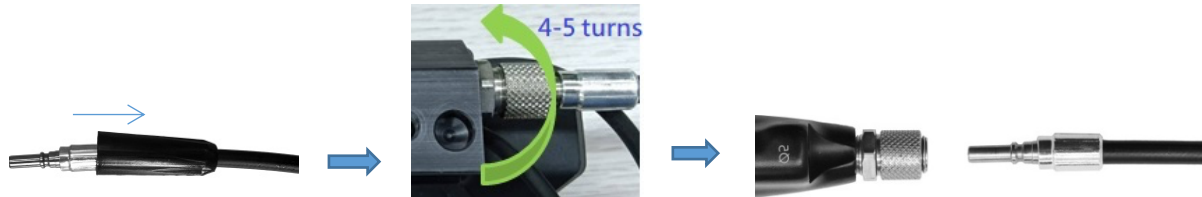
B: When replace new hose for caliper side: No.2-4

1. Choose the appropriate length and PN for your bike. You may measure the original hose length from center of the banjo bolt to end of QE connector (see fig. below).
2. First disconnect the lower section of hydraulic hose from ABS unit to prevent oil loss.
3. Remove the 4mm Banjo bolt to separate the caliper and hydraulic hose.
4. Attach the new hose to the caliper with banjo fitting two new O-rings, and bolt.
5. The banjo bolt should be torque to 6-8Nm.



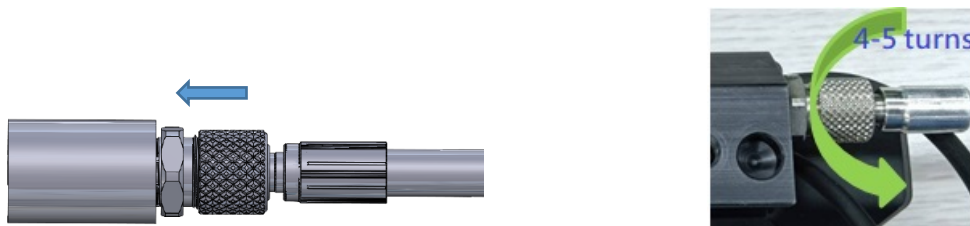


A. Disconnecting the QE connector from the ABS unit



1. Take off the QE connectors rubber cover by sliding it away from the ABS unit.
2. Unscrew the union nut by turning it clockwise 4-5 turns until the hose QE connector releases with a slight pull

B. Connecting the hydraulic hose to the ABS unit



1. Push the union nut towards the ABS unit and plug the hose connector into the union nut at the same time.
2. Turn union nut counterclockwise to lock the QE connector.
3. Check by pulling the brake hose to see if it pops out.

II. Replacing mineral oil

1. **The brake must be bleed after replacing the caliper, lever, or hydraulic hose.**
2. Follow regular operation of hydraulic disc brake or refer to our Bleed Procedure instructions to bleed the brake.
3. Only use TRP and Tektro branded mineral oil when servicing the brake.

- NOTE**
1. Use original specification spare parts for maintenance.
 2. Suggest having qualified bicycle mechanic to install, secure and maintain.
 3. Fully check brake performance before riding.
 4. If any doubts, we recommend taking the bike to a Bosch ABS authorized dealer shop to check first.

For warranty related questions or more information please contact Tektro Service Center which you can find from our homepage www.tektro.com.

Feb.05, 2024