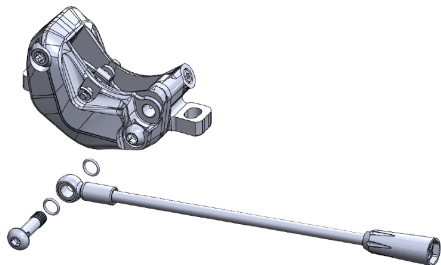


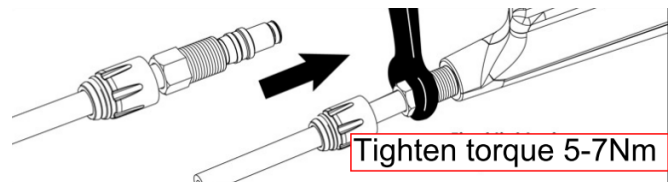
TEKTRO – Bosch ABS brake HD-E731 Spare Parts Manual

Model No.	No.	Item	Description	Part No.
HD-E731	1	Caliper Warranty	DO6.7 Caliper for Front (4 piston)	ABHC000124
	2	Lever Set	DO3.K Lever set, Left w/ABS logo	ABHL000582
	3		DO3.K Lever set, Right	ABHL000581
	4		DO3.K Lever Set, Left	ABHL000593
	5		DO3.K Lever Set, Right w/ABS logo	ABHL000594
	6		Lever Blade	DO3.0 Lever Blade Kit
	7	Reservoir Kits	DO3.2 Reservoir Cap Kit - Left	ABOT000820
	8		DO3.2 Reservoir Cap Kit - Right	ABOT000821
	9	Lever hose kits	850mm hose kit W/OE connector	ABOT001117
	10	Caliper side hose kits	125mm hose kit with OE & banjo connector	ABOT001157
	11		150mm hose kit with OE & banjo connector	ABOT001159
	12		190mm hose kit with OE & banjo connector	ABOT001161

No.1 Caliper



No.2-5 lever

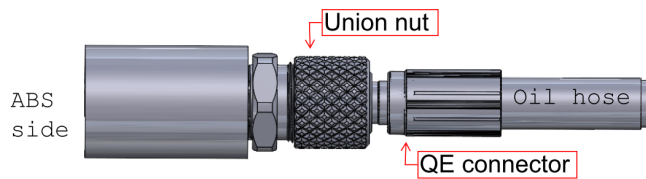


I. Installing new caliper: No.1

1. First disconnect the lower section of hydraulic hose from ABS unit to prevent oil loss.
2. Remove the 4mm Banjo bolt to separate the caliper and hydraulic hose.
3. Attach the new caliper to the banjo fitting using two new O-rings, and bolt.
4. The banjo bolt should be torque to 6-8Nm.

II. Replace new lever : No.2-5

1. Loosen the 8mm compression nut to remove the hydraulic hose from the lever.
2. Cut off the old olive and barb (cut hose 1cm from the end), make sure the cut is square.
3. Slide the compression nut cover, compression nut, and olive onto the hose and then install a new barb into the hose.
4. Seat the barb in the lever then slide the olive and compression nut into place and tighten to 5-7Nm.
5. For further details, you may refer to our "EZ-Plug" manual.

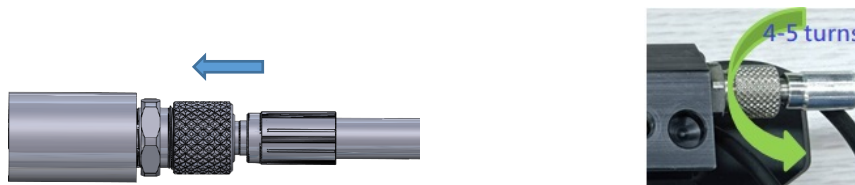


A. Disconnecting the QE connector from the ABS unit



1. Take off the QE connector rubber cover by sliding it away from the ABS unit.
2. Unscrew the union nut by turning it clockwise 4-5 turns until the hose QE connector releases with a slight pull.

B. Connecting the hydraulic hose to ABS unit



1. Push the union nut towards the ABS unit and plug the hose connector into the union nut at the same time.
2. Turn union nut counterclockwise to lock the QE connector.
3. Check by pulling the brake hose to see if it pops out.

VI. Replacing mineral oil

1. The brake must be bled after replacing the caliper, lever, or hydraulic hose.
2. Follow regular operation of hydraulic disc brake or refer to our Bleed Procedure instructions to bleed the brake.
3. Only use TRP and Tektro branded mineral oil when servicing the brake.

- NOTE**
1. Use original specification spare parts for maintenance.
 2. Suggest having qualified bicycle mechanic to install, secure and maintain.
 3. Fully check brake performance before riding.
 4. If any doubts, we recommend taking the bike to a Bosch ABS authorized dealer shop to check first.

For warranty related questions or more information please contact Tektro Service Center which you can find from our homepage www.tektro.com.

Feb.05, 2024