

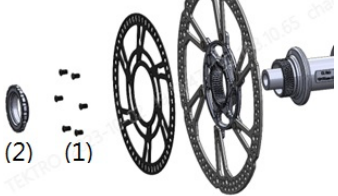


Rotor, Tone wheel & Adapter compatible chart for ABS brake

Rotor line-up approved for BOSCH ABS

Different rotor size from original bike is required to configure/update setting parameters by BOSCH approved dealers.

Rotor	6-bolt type Hub & Rotor		CL Hub + 6-bolt rotor		CL Hub + CL Rotor	
Model	TR180-17 R180S01E	TR203-17 R203S01E R220S01E	TR180-17 R180S01E	TR203-17 R203S01E R220S01E	R180C03E	R203C03E
Tone Wheel	TW116S01	TW140S01	TW116C01	TW140C01	TW116C02	TW140C02
Lock Ring			SP-TR81 : Ø12 SP-TR86 : Ø15-20		SP-TR80 : Ø12 SP-TR85 : Ø15-20	
						

Note (1). Rotor bolts should be torqued to 4-6Nm
 (2). Lock ring should be torqued to 40Nm.

Adapter to Rotor size compatible specification:

A. For SR Suntour fork (direct mount WSS)

Compatibility Chart for Hose length / Adapter / Tone wheel			Rotor Size		
			Ø180	Ø203	Ø220
1. PM180: Mobie 34 Mobie 34 CGO20 Mobie 35 Aion 36	PM180	Hose length	125mm	125mm	150mm
		Adapter	Direct Mount	P23 / A12	P40
		Tone Wheel	TW Ø116	TW Ø116	TW Ø116
2. PM203: Durolux 38	PM203	Hose (A)	NA	125mm	150mm
		Adapter		Direct Mount	P17
		Tone Wheel		TW Ø140	TW Ø140

B. For PM fork

Compatibility Chart for Hose length / Adapter / Tone wheel			Rotor Size			
			Ø180	Ø203	Ø220	
PM Fork	PM160	Caliper Hose length	150mm	190mm	NA	
		Adapter	PS20-116	PS43		
		Tone Wheel	TW Ø116	TW Ø140		
	PM180	Caliper Hose length	NA	125mm	150mm	
		Adapter		PS23	PS40	
		Tone Wheel		TW Ø140	TW Ø140	
	PM200	Caliper Hose length	NA	NA	125mm	
		Adapter			PS02-140	
		Tone Wheel			TW Ø140	
	PM203	Caliper Hose length	NA	NA	125mm	
		Adapter			PS17	
		Tone Wheel			TW Ø140	
	PM Bike Frame (Rear)	PM160	Adapter	PS20-116	PS43	NA
			Tone Wheel	TW Ø116	TW Ø140	
		PM180	Adapter	NA	PS23	PS40
Tone Wheel			TW Ø140	TW Ø140		
PM203	Adapter	NA	NA	NA		
	Tone Wheel					

Note:

1. Tighten to 6-8Nm for M6 mounting bolt
2. Verification distance from tone wheel to speed sensor 0.5-1.0mm.

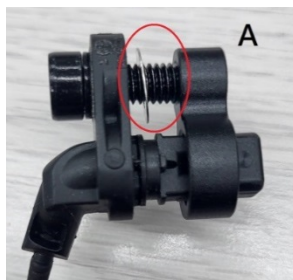
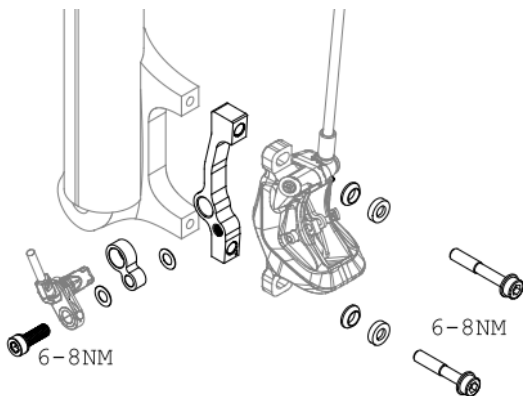
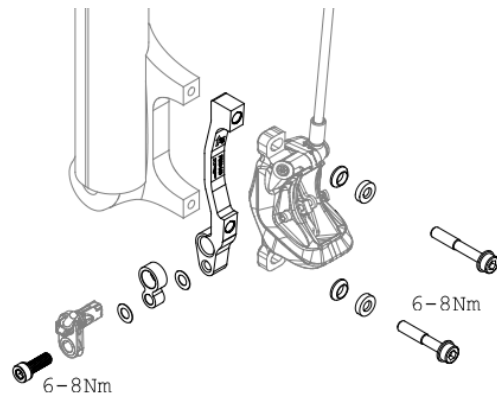
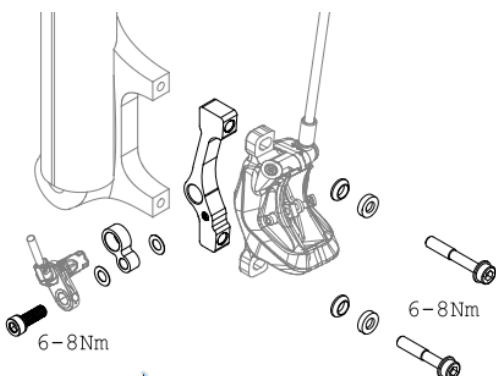
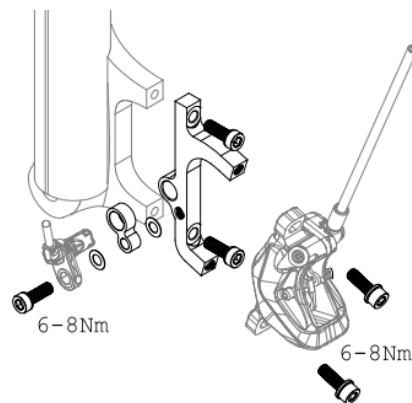
Verification distance with thickness gauge

Normal gap: 0.5mm

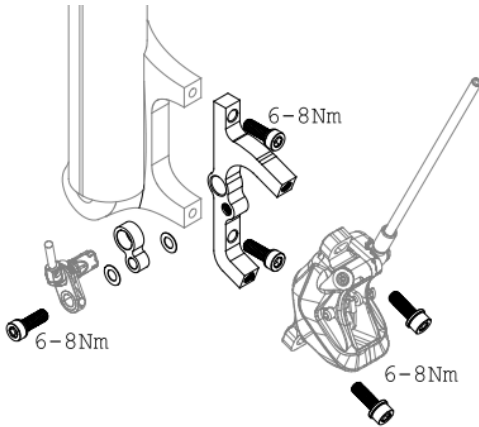
Minimum / Maximum: 0.2mm – 1.0mm

If needed adjustment made by:

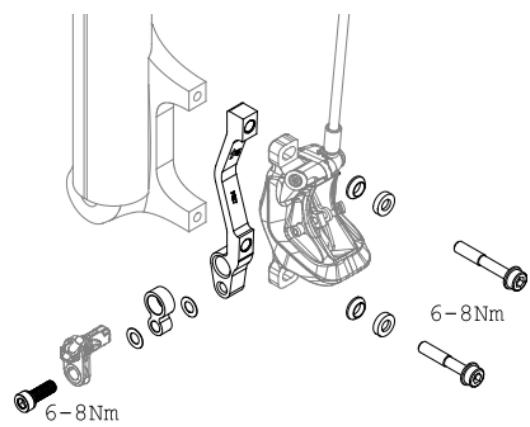
- A. Adjusting with 0.3mm washers
- B. Aligning the direct mount adapter

**Adapter mounting**PS20-116PS20-140PS23PS40

PS43



PS17



OIL Bleed:

- A. ABS brake : Follow regular operation of hydraulic disc brake.
- B. ABS unit : Bleeding position for ABS Unit:

Note 1: If for IBD, just let the bike on the ground

Note 2: Assembly restrictions on bleeding:

- The control unit must be in one of the 3 position shown during bleeding
- 2 allowed position vertical
- 2 allowed position horizontal

Allowed orientations for manual bleeding:



For warranty related questions or more information please contact Tektro/TRP Service center which you can find from our homepage www.tektro.com.